

|||| HENNIG®

PROTECT YOUR SUCCESS

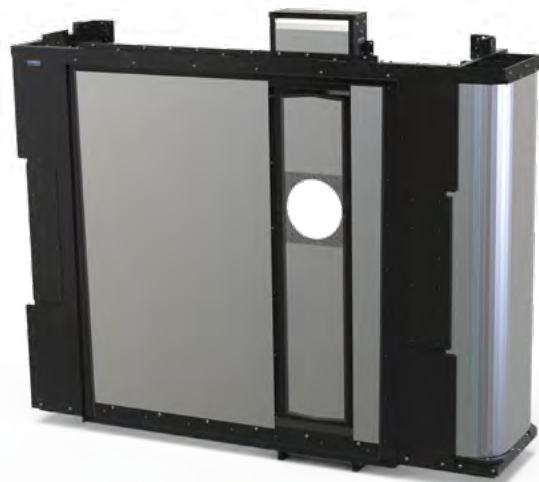
XY FACE SHIELDS

COMPLETE MULTI-AXIS PROTECTION FOR HORIZONTAL MACHINING CENTERS

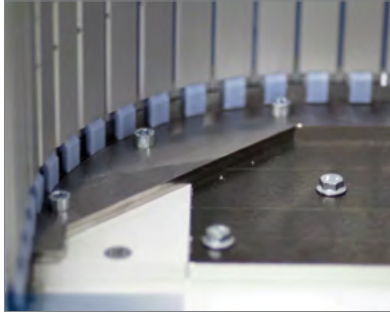
MULTI-AXIS PROTECTION

Our face shields have full, multi-axis protection against the hot chips and flood coolant that can potentially effect machine uptime and accuracy.

- Assembly-friendly, using a compact building block design that allows replacement of individual components
- Resistant to damage from high dynamic forces
- Individually engineered to your specifications and space requirement
- CL wiper lip absorbs the vibrations of the aluminum apron up to 3 mm
- Mechanical guide system specially designed for aluminum aprons. See other side for details.
- Based on space availability, these covers can be designed with following:
 - Telescopic steel covers
 - Stainless steel
 - Fabric roll-ups
 - Aluminum extruded aprons
 - Lamella bellows

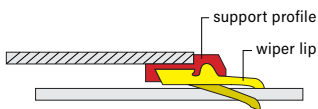


ISO 9001:2015
REGISTERED



TRACK GUIDE SYSTEMS

- The track guide system guides the apron in one or two directions, depending on apron type.
- The available space on or inside the machine determines the shape of the track guide, whether redirected into an available space or rolled up spirally into any position.
- The nearly wear free track guide system is capable of high speeds up to 100 m/min (3936 inch/min).
- Extremely easy to slide and pull with accelerations up to 1 g.



WIPERS

CL1 wiper systems

- Suitable for large areas, aluminum apron systems, and a variety of applications.
- Optimum scrape performance—smooths out unevenness of up to 3 mm with ease.
- Perfect sealing.
- Highly reliable and resistant against all standard coolants.
- Available in continuous lengths.

